



SecurityGateway

For Exchange/SMTP Servers

Quick Start Guide



Zen Software - UK and Ireland Distributor

t: 0161 660 5738
e: support@zensoftware.co.uk
w: www.zensoftware.co.uk

Quick Start Guide - SecurityGateway

Contents

Step 1 – Download Install Files	3
Step 2 – Welcome Screen	5
Step 3 – License Agreement	6
Step 4 – Installation Location.....	7
Step 5 – Registration Information	8
Step 6 – Begin Installation.....	9
Step 7 – Your Domain Name.....	10
Step 8 – Choosing a Verification Source	11
Step 9 – Email Server Details.....	13
Step 10 – Administrator Account Setup	14
Step 11 – SMTP Port Configuration.....	15
Step 12 – HTTP User Interface	16
Step 13 – Final Steps	17
Step 14 – Log in	18
Install Complete - Dashboard View.....	19
Additional Information – Preparing for Install	20



Zen Software - UK and Ireland Distributor

t: 0161 660 5738
e: support@zensoftware.co.uk
w: www.zensoftware.co.uk

Step 1 – Download Install Files



zen
SOFTWARE

0161 660 5738
sales@zensoftware.co.uk

Home Account Products Support Resellers

SecurityGateway
For Exchange/SMTP Servers

Latest release is: 1.0.2, [release notes](#)

Download the latest release

SecurityGateway for Exchange/SMTP Servers
This version: v1.0.2
File size: 31.2 MB
Runs on: Microsoft Windows Vista/XP /2000/2003 operating systems
[\[Download\]](#)

Click [here](#) for SecurityGateway documentation.

ProtectionPlus for SecurityGateway
This version: v1.0.0
File size: 24.7 MB
Runs on: Microsoft Windows Vista/XP /2000/2003 operating systems
[\[Download\]](#)

- > [Overview](#)
- > [Datasheet](#)
- > [Download Trial](#)
- > [Pricing](#)
- > [Buy](#)

- > [Screenshots](#)
- > [Features...](#)
- > [Demo Video](#)
- > [Deployment](#)
- > [ProtectionPlus](#)

- > [Documentation](#)
- > [Knowledge Base](#)
- > [Contact Us](#)

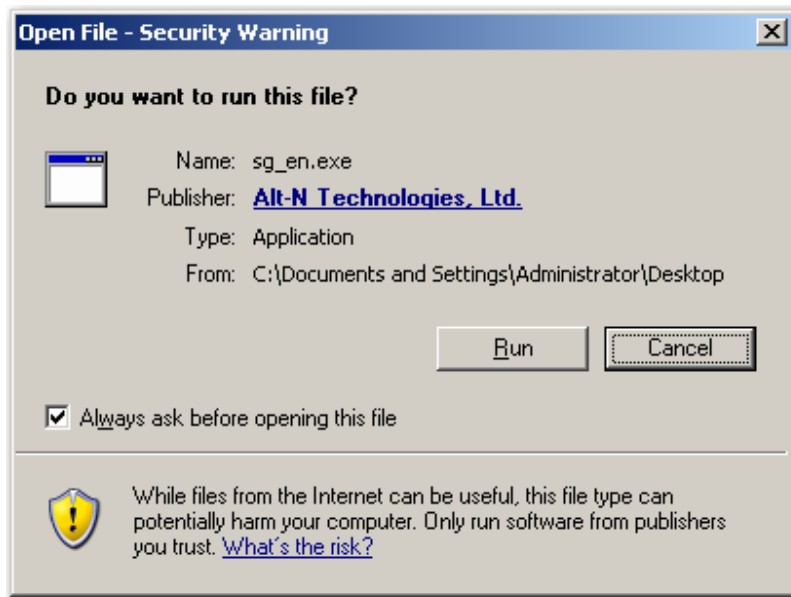
Ensure you've downloaded the latest versions of both SecurityGateway and the ProtectionPlus plug-in from:

www.zensoftware.co.uk/securitygateway



Zen Software - UK and Ireland Distributor

t: 0161 660 5738
e: support@zensoftware.co.uk
w: www.zensoftware.co.uk



Double-click the SecurityGateway installer to begin the installation.



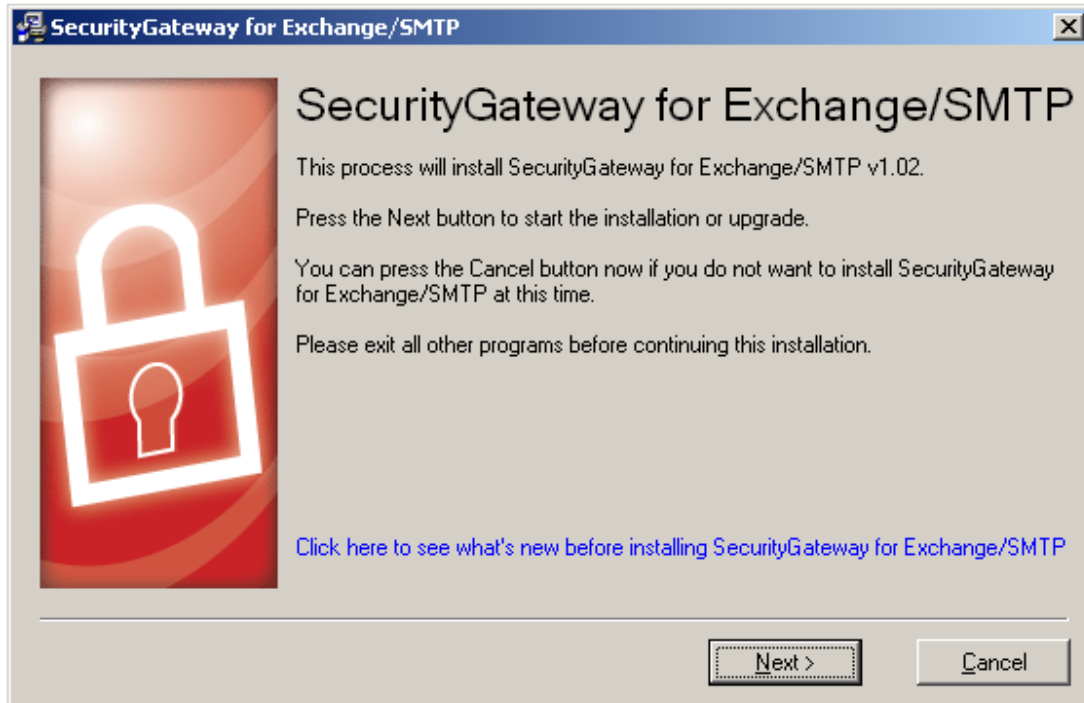
Once you've launched the installer, you'll see the splash screen.



Zen Software - UK and Ireland Distributor

t: 0161 660 5738
e: support@zensoftware.co.uk
w: www.zensoftware.co.uk

Step 2 – Welcome Screen



This is the welcome screen, click "Next" to continue.



Zen Software - UK and Ireland Distributor

t: 0161 660 5738

e: support@zensoftware.co.uk

w: www.zensoftware.co.uk

Step 3 – License Agreement



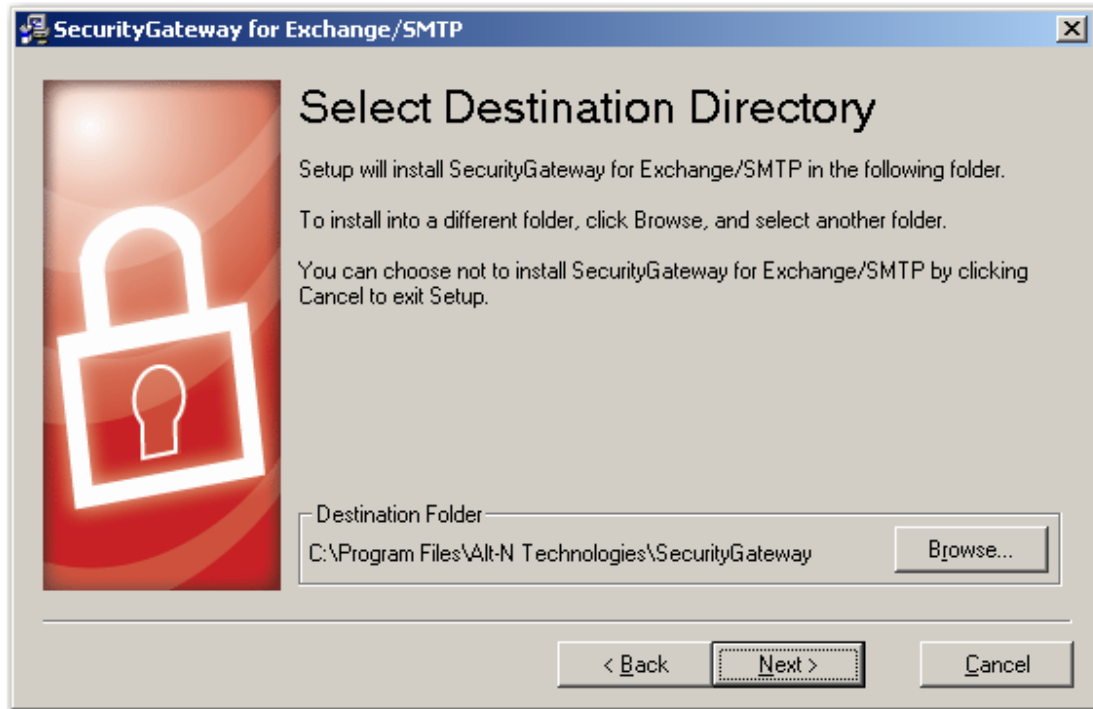
At the License Agreement, please read the terms and click "I Agree" button to continue.



Zen Software - UK and Ireland Distributor

t: 0161 660 5738
e: support@zensoftware.co.uk
w: www.zensoftware.co.uk

Step 4 – Installation Location



Select a destination directory for the installer to copy files into. Click the “Next” button to continue.



By default, SecurityGateway installs into the \Program Files\ directory for Windows Vista compliance, but any directory location can be specified.



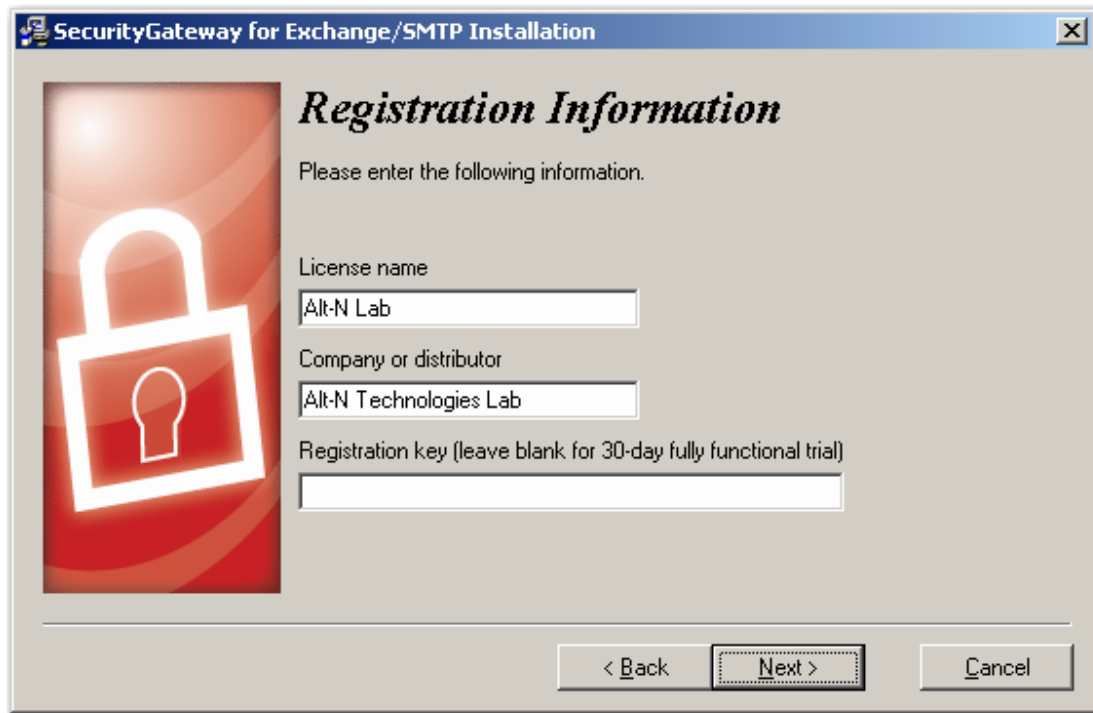
Zen Software - UK and Ireland Distributor

t: 0161 660 5738

e: support@zensoftware.co.uk

w: www.zensoftware.co.uk

Step 5 – Registration Information



SecurityGateway for Exchange/SMTP Installation

Registration Information

Please enter the following information.

License name
Alt-N Lab

Company or distributor
Alt-N Technologies Lab

Registration key (leave blank for 30-day fully functional trial)

< Back Next > Cancel

Registration Information

Enter your registration information and click the "Next" button to continue.



Leaving the registration key blank creates a 30-day trial key as with all of Alt-N's products.



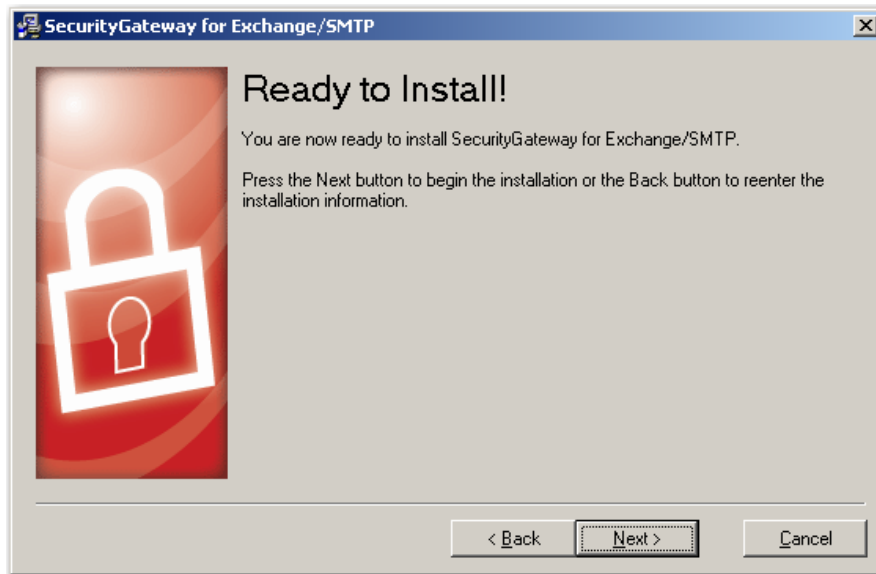
Zen Software - UK and Ireland Distributor

t: 0161 660 5738

e: support@zensoftware.co.uk

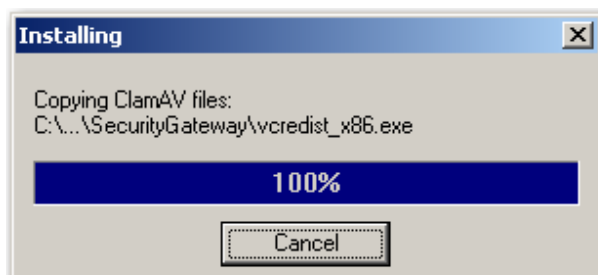
w: www.zensoftware.co.uk

Step 6 – Begin Installation

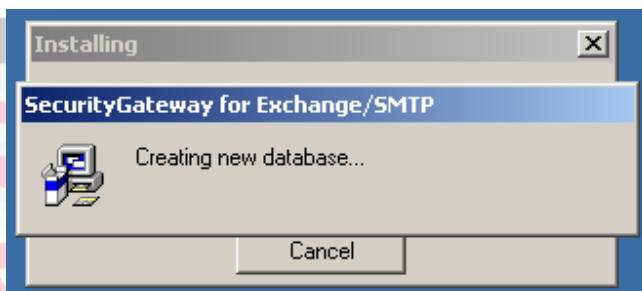


Ready to install!

Click the “Next” button to continue with the installation process.



The files are copied to the destination directory.



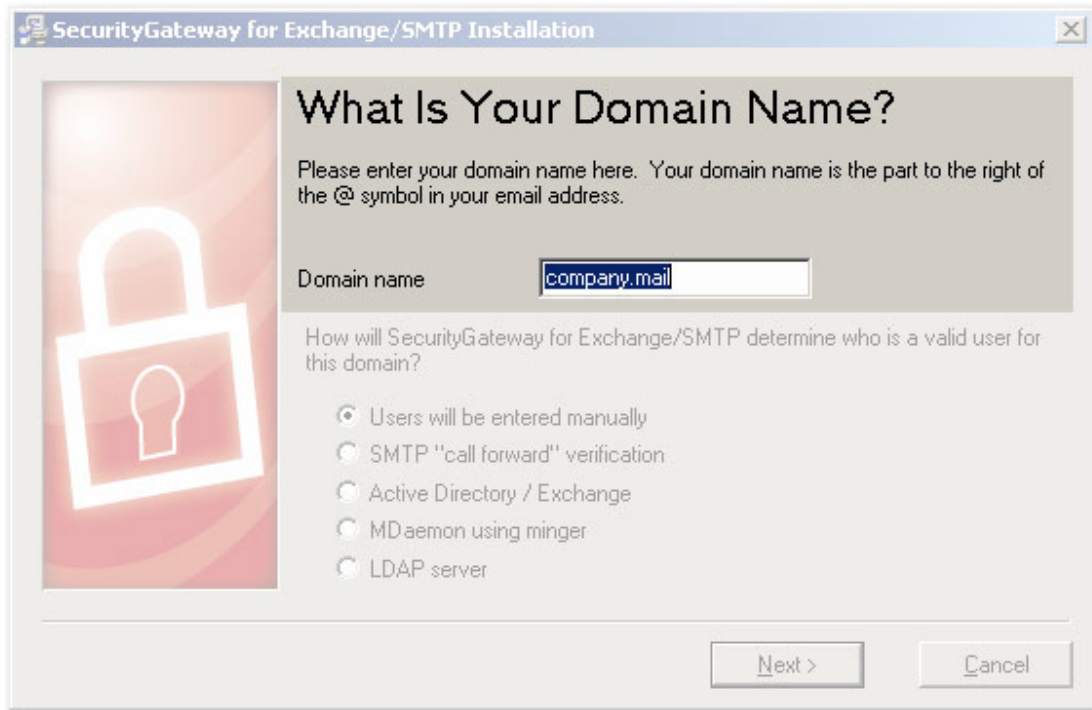
The database is then created.



Zen Software - UK and Ireland Distributor

t: 0161 660 5738
e: support@zensoftware.co.uk
w: www.zensoftware.co.uk

Step 7 – Your Domain Name



Enter the domain name used in your email address (e.g. example.com).



If there are multiple domain names to be setup in SecurityGateway, enter the first one here, and during the setup the others can be configured once installation is complete



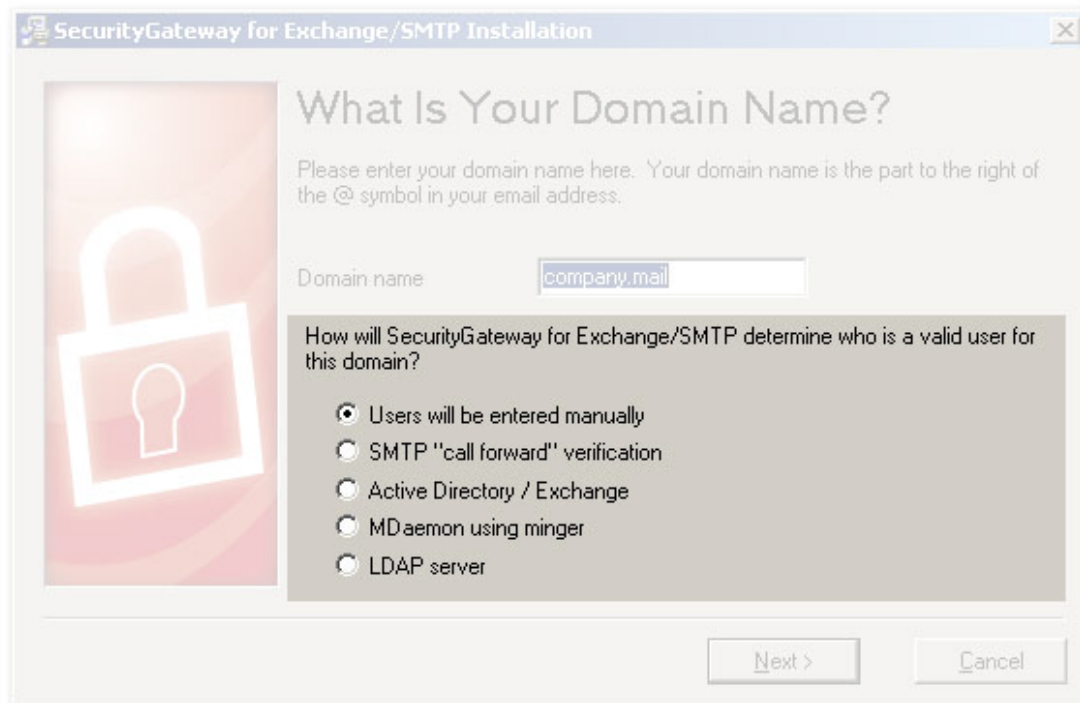
Zen Software - UK and Ireland Distributor

t: 0161 660 5738


e: support@zensoftware.co.uk

w: www.zensoftware.co.uk

Step 8 – Choosing a Verification Source



Choose the type of User Verification Source SecurityGateway will use to confirm the validity of users and local email addresses.

 *This may be changed later, and there may be multiple selections, this is only the initial setting. After you have selected your initial user verification source, click the “Next” button to continue.*


The five User Verification Source types are:

1) Users will be entered manually

The administrator(s) will enter each user/ address manually to set them up in SecurityGateway.

2) SMTP 'call forward' verification

This verification source uses an SMTP session to determine whether email addresses exist on the mail server. If they do, they're automatically added to the database and the mail accepted.

 *When using this verification method, at this time aliases will also count as users so administrators should be aware of this when choosing a license size.*

3) Active Directory/ Exchange

SecurityGateway will query the AD/Exchange server to confirm the validity of any unknown email addresses. If they're found, they're automatically added and the full user list pruned for any changes.



Zen Software - UK and Ireland Distributor

t: 0161 660 5738

e: support@zensoftware.co.uk

w: www.zensoftware.co.uk



When using this verification method, any aliases will be recognized as such and will not be counted as a “user” in terms of licensing.

4) MDAemon using Minger

SecurityGateway will check with MDAemon’s own Minger server to confirm the validity of any unknown email addresses.



When using this verification method, any aliases will be recognized as such and will not be counted as a “user” in terms of licensing.

5) LDAP server

SecurityGateway will query an LDAP database to confirm the validity of unknown local addresses.



LDAP (Lightweight Directory Access Protocol) is the Internet protocol for directories and found in a range of applications, including some mail servers.

As with SMTP verification, at this time aliases will also count as users so administrators should be aware of this when choosing a license size.



Zen Software - UK and Ireland Distributor

t: 0161 660 5738

e: support@zensoftware.co.uk

w: www.zensoftware.co.uk

Step 9 – Email Server Details

SecurityGateway for Exchange/SMTP Installation

Email Server

SecurityGateway for Exchange/SMTP will send all email for domain company.mail to this email server:

Description:

Host Name or IP: Port:

Requires SMTP authentication

User name:

Password:

< Back Next > Cancel

Description

This field will auto-populate with the domain information you entered at the previous screen.

Host Name or IP

This field will auto-populate with the domain information you entered at the previous screen.

Port

Set the port that SecurityGateway will use to send mail to the server (the default is 25).



If you have a specific port setup for your internal mail, it can be accommodated here during the install.

Requires SMTP Authentication

Finally, if you would like the domain mail server to authenticate with SecurityGateway when sending emails, those credentials can be entered here during the installation.

Click the "Next" button to continue when finished.



Zen Software - UK and Ireland Distributor

t: 0161 660 5738

e: support@zensoftware.co.uk

w: www.zensoftware.co.uk

Step 10 – Administrator Account Setup



SecurityGateway for Exchange/SMTP Installation

Set Up Administrator Account

The created account will be a global administrator. You can set up more accounts from within SecurityGateway later.

Local User - member of local domain (company.mail)
 External - not a member of local domain (company.mail)

Full name: Frank Thomas

Mailbox (don't include a domain name): frank.thomas

Password: [REDACTED]

Verify Password: [REDACTED]

< Back Next > Cancel

Set Up Administrator Account (Local user)

This account is a global administrator account with access to all of SecurityGateway's settings. Additional accounts and administrators can be set up after the installation.

Enter the user's name (e.g. Frank Thomas).



The mailbox name is the part of the email address to the left of the '@' sign (e.g. if the email address is frank.thomas@example.com, the mailbox name would simply be 'frank.thomas').

Set the user's password.

It is suggested that you choose a "strong" password, consisting of eight or more characters including capital and lower case letters, numbers, and special characters not defined as letters or numerals:

`~ ! @ # $ % ^ & * () _ - + = { } [] \ | : ; " ' < > , . ? /`

Set Up Administrator Account (External)

An administrator can be external to the SecurityGateway domains. Simply choose the external user option and instead of defining the administrator's mailbox, enter the full, external email address. This will be their username when logging in to SecurityGateway.

Click the "Next" button to continue.



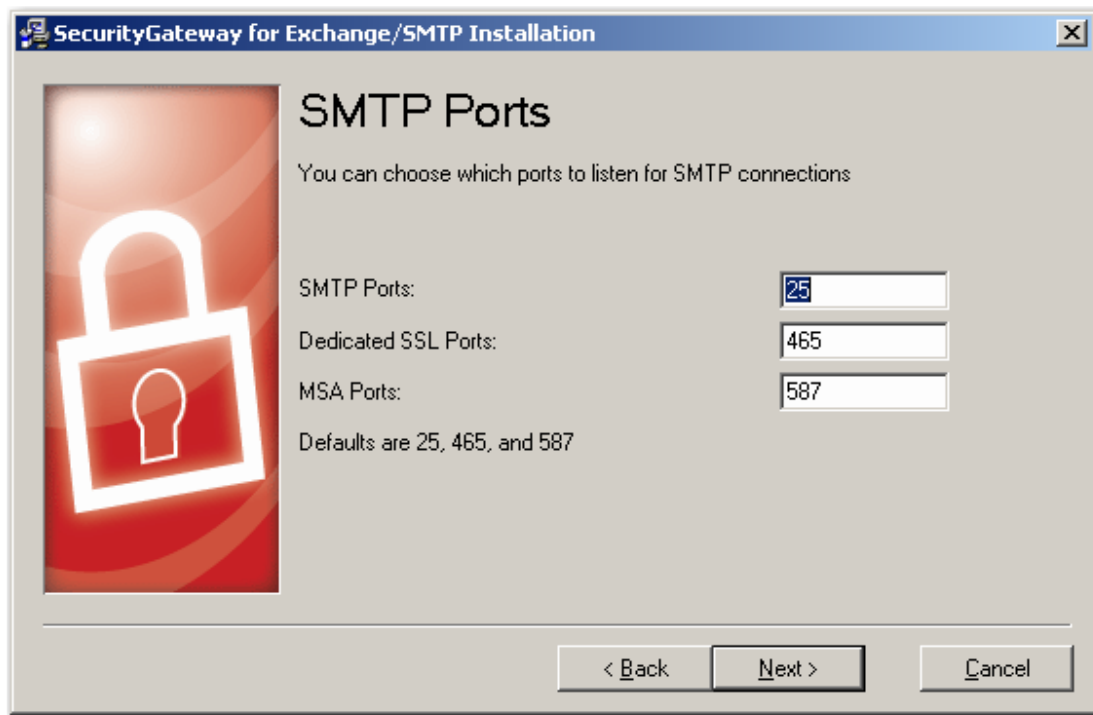
Zen Software - UK and Ireland Distributor

t: 0161 660 5738

e: support@zensoftware.co.uk

w: www.zensoftware.co.uk

Step 11 – SMTP Port Configuration



SMTP Ports

For most installations these won't need to be altered.

The ports should be left as their defaults, unless there are special circumstances such as a custom setup for mail on the internal network or a router is redirecting ports for example.

Click the "Next" button to continue.



Zen Software - UK and Ireland Distributor

t: 0161 660 5738
e: support@zensoftware.co.uk
w: www.zensoftware.co.uk

Step 12 – HTTP User Interface

SecurityGateway for Exchange/SMTP Installation

HTTP User Interface

The HTTP Host Name will be used to construct login links for the quarantine summary report and other system generated email messages.

HTTP Host Name: (ex: sg.company.mail)

sg.company.mail

You can choose which ports to listen on for HTTP connections

HTTP Port: 4000 Default: 4000

HTTPS Port: 4443 Default: 4443

< Back Next > Cancel

HTTP Host Name

This field will auto-populate with the domain information you entered in Step 7.



If you leave the domain name as the top-level only (e.g. example.com), it may resolve to the Web server and not to SecurityGateway.

HTTP Port

For most installations these won't need to be altered.

The default listening port of the interface is 4000 and the SSL listening port is 4443.

These settings are important as they are used for configuring SecurityGateway's web interface. This host name and these ports will be used in login links created by SecurityGateway for the various notification messages and quarantine summaries sent to users.

Click the "Next" button to continue.



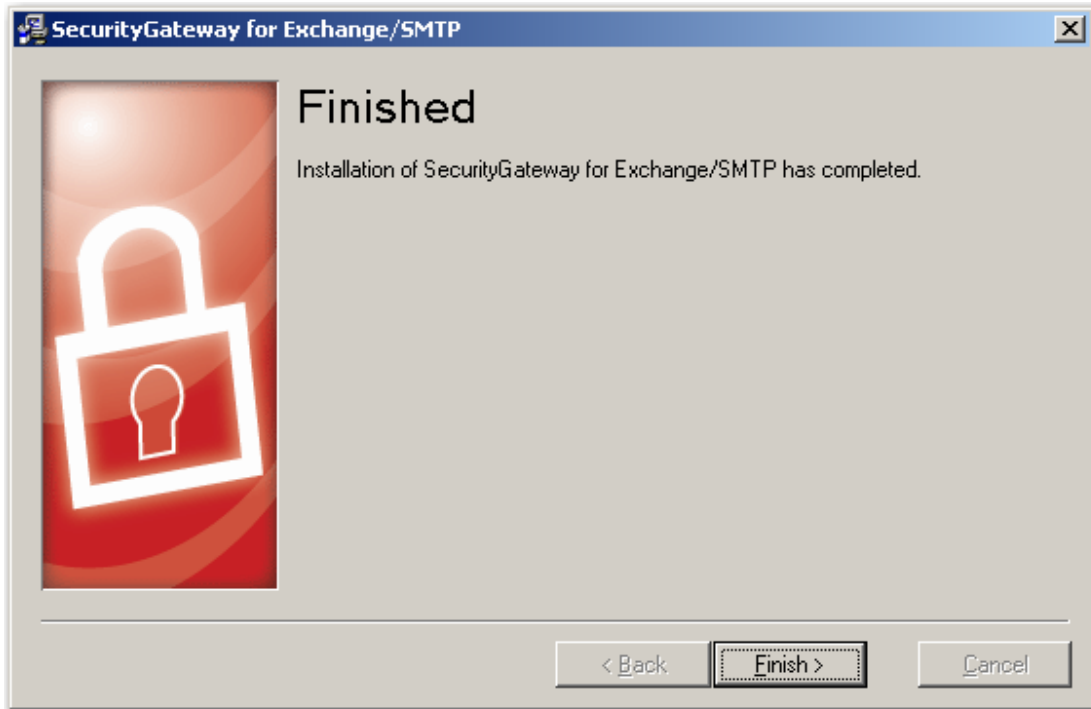
Zen Software - UK and Ireland Distributor

t: 0161 660 5738

e: support@zensoftware.co.uk

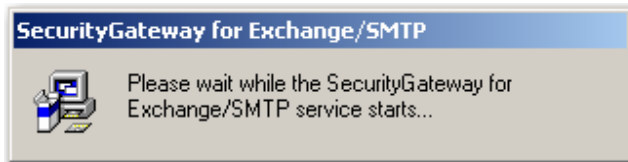
w: www.zensoftware.co.uk

Step 13 – Final Steps

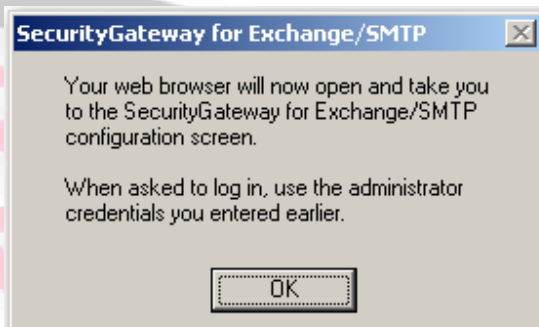


Your set-up is now complete.

Click "Finish" to complete the installation.



The installer starts the SecurityGateway service.



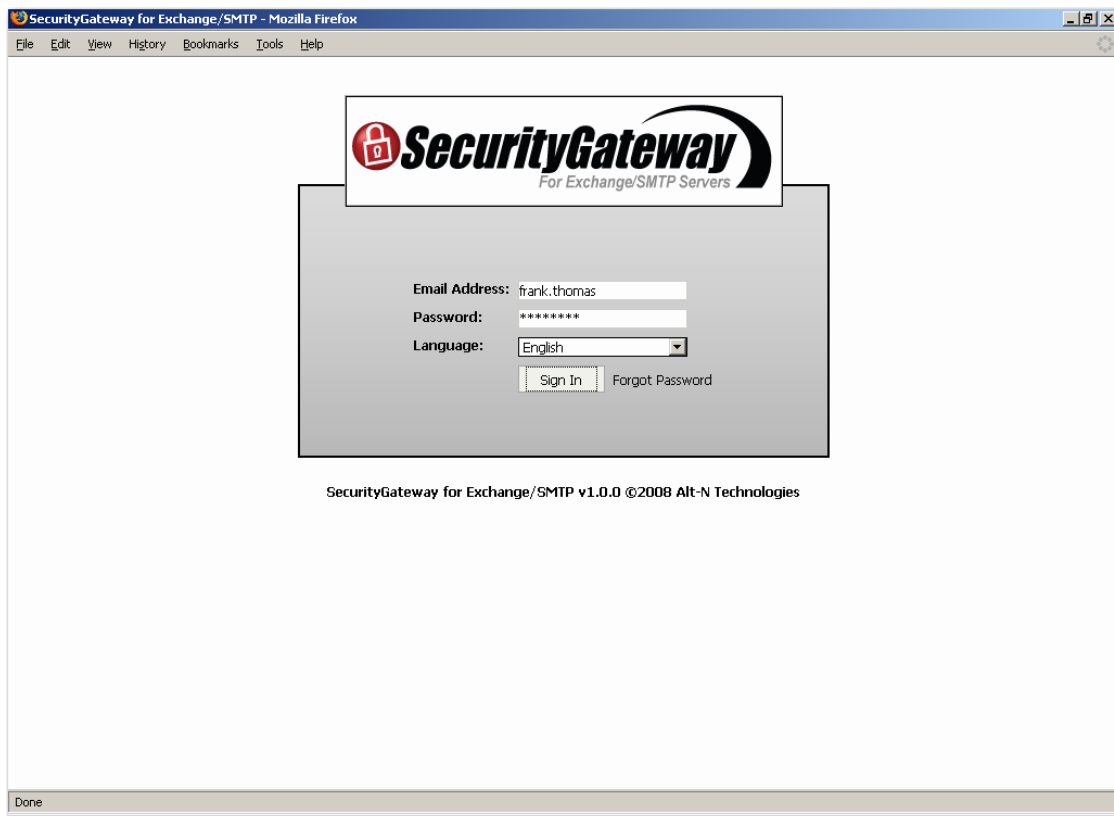
Zen Software - UK and Ireland Distributor

t: 0161 660 5738

e: support@zensoftware.co.uk

w: www.zensoftware.co.uk

Step 14 – Log in



The SecurityGateway log in page opens.

You're now able to log in using the credentials of the global administrator you've just created during installation.



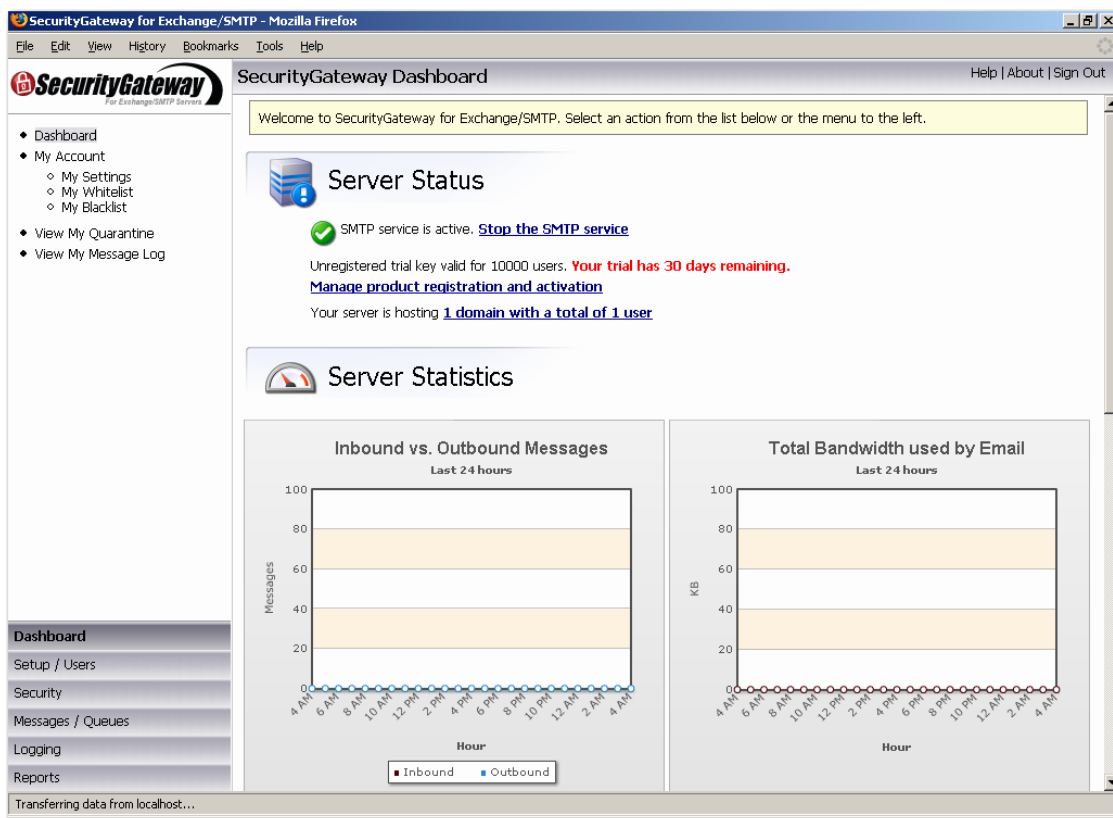
Zen Software - UK and Ireland Distributor

t: 0161 660 5738

e: support@zensoftware.co.uk

w: www.zensoftware.co.uk

Install Complete - Dashboard View



Congratulations, your installation is complete and you are ready to start using SecurityGateway!



Zen Software - UK and Ireland Distributor

t: 0161 660 5738

e: support@zensoftware.co.uk

w: www.zensoftware.co.uk

Additional Information – Preparing for Install

There are three domain names to plan for when setting up SecurityGateway (these should all have proper and correct DNS entries):

1. The domain name used in the email address

This is the first domain you intend to have SecurityGateway protect.

This domain's MX record needs to point to SecurityGateway's IP address or SecurityGateway's domain name (ensure this isn't the email server SecurityGateway is protecting).

NOTE - If the name used in the email address points to the domain name of SecurityGateway, that domain name will need an A record pointing to the IP address of SecurityGateway.

2. The domain name of the email server SecurityGateway is protecting

This domain name needs an A record that points to the email server SecurityGateway is protecting.

3. The domain name of the SecurityGateway server

Make it's A record points to the SecurityGateway server. Leaving the domain name as the top-level domain name may point to the web server and not to SecurityGateway.

Example:

Let's say these domains exist with these DNS records where 10.0.0.1 is the web server:

example.com
A = 10.0.0.1
MX = mail.example.com

mail.example.com
A = 10.0.0.2

Setting up SecurityGateway for this existing domain, example.com, and there is a new computer with SecurityGateway at the IP 10.0.0.3. The domain example.com's MX record needs updating and sg.example.com needs to be created. The DNS records would then be:

example.com
A = 10.0.0.1
MX = sg.example.com

mail.example.com
A = 10.0.0.2

sg.example.com
A = 10.0.0.3



Zen Software - UK and Ireland Distributor

t: 0161 660 5738
e: support@zensoftware.co.uk
w: www.zensoftware.co.uk